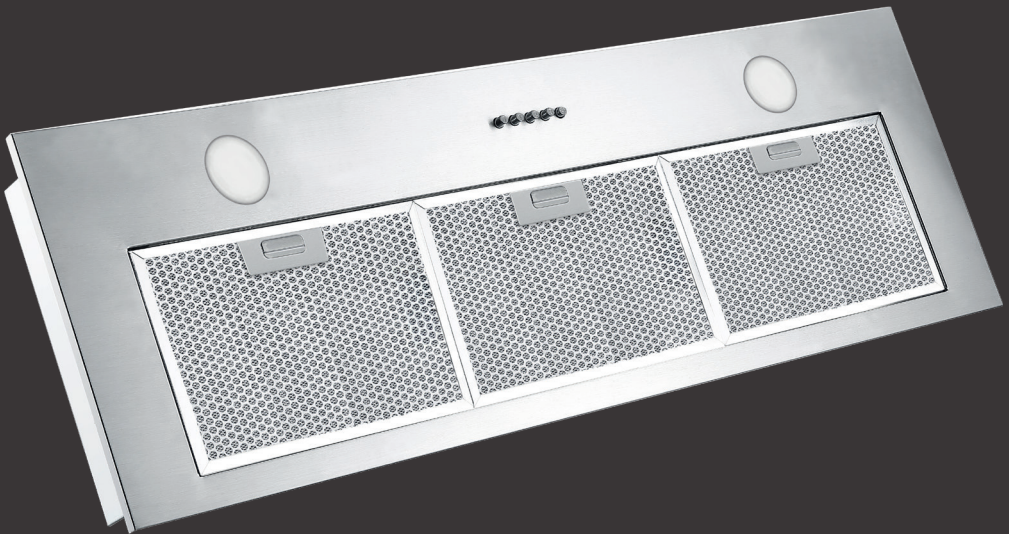


90cm Undermount Rangehood

ORU90XL

omega

Designed to Enhance
EST. 1981



Introducing your new 90cm Undermount Rangehood

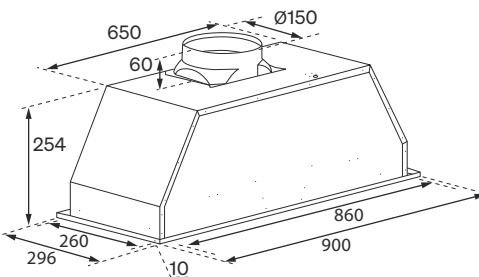
Installation

Before beginning the installation of your rangehood, consider your ducting method. We recommend ducting your rangehood wherever possible, for the maximum performance, however this rangehood can be operated in recirculating mode. You will need to purchase the relevant Carbon Filter accessory which is available for purchase from our After Sales Service Team.

When positioning the rangehood for installation and use, we advise that the rangehood is mounted at a height of between 650–750mm above the cooking surface for safety and performance of your rangehood.

For a complete installation guide, refer to the provided user manual, from pages 06–07.

Dimensions



Details

Product Dimensions (W, D, H mm): 900 × 296 × 254

Warranty Period: 2 Years

The Controls

Your Undermount Rangehood features push button controls with three speed levels of extraction

Push the '1' button, and the rangehood will operate at a low speed.

Ideal for light frying, simmering water, etc.

Push the '2' button, and the rangehood will operate at a medium speed.

Ideal for frying, wok cooking, heavy boiling water, etc.

Push the '3' button, and the rangehood will operate at a high speed.

Ideal for grilling, intensive frying, wok cooking, stir frying, etc.

Push the '0' button to switch the rangehood fan off.

Push the 'Light' button and the LED lights will turn on. To turn the lights off, simply push the 'Light' button again.



Detailed information on operating your new rangehood can be found in the provided user manual, page 08.

Support

Telephone: 1300 11 HELP (4357)

Email: support@residentiagroup.com.au

